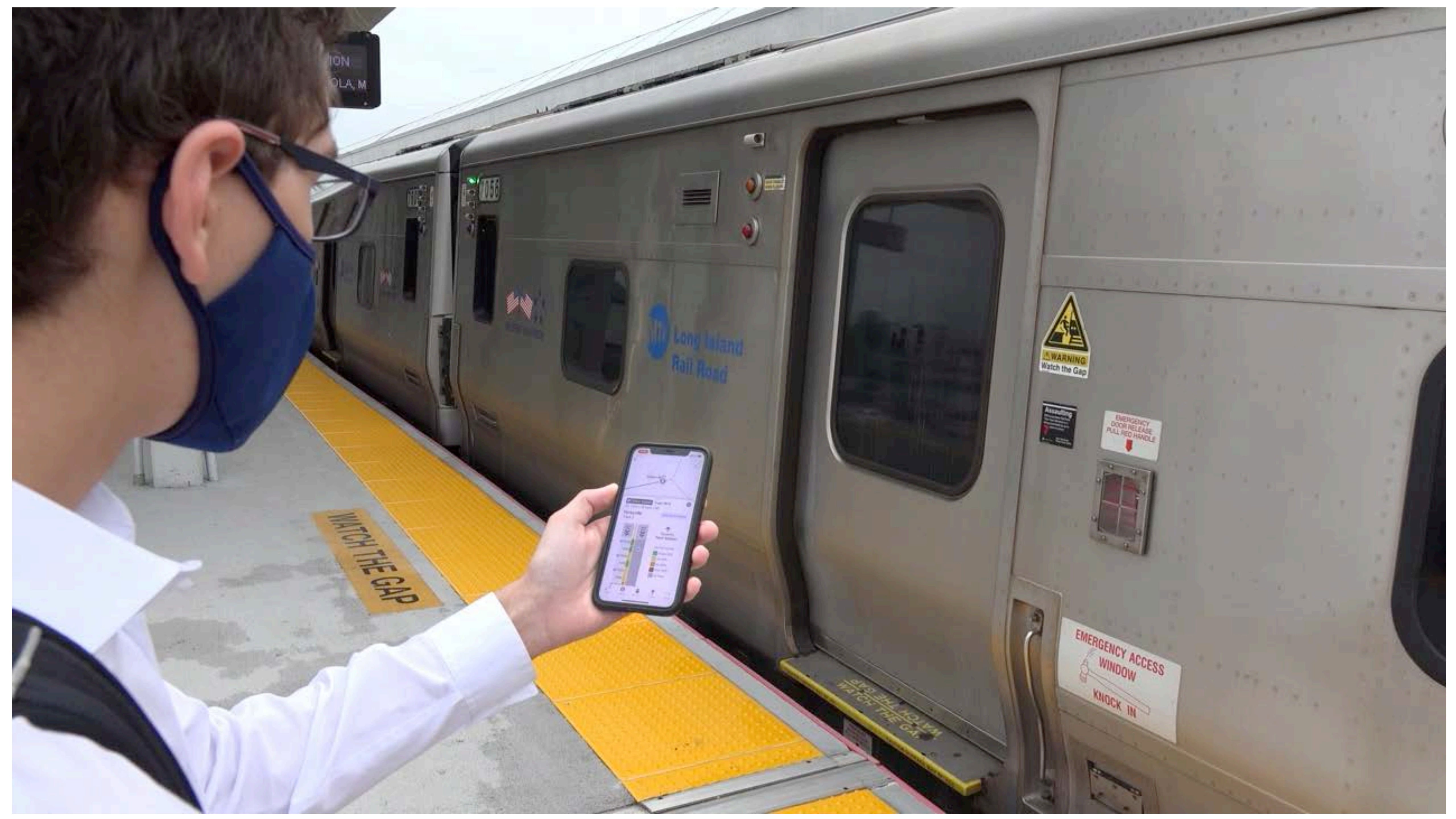


TrainTime App

MTA Long Island Rail Road

July 29, 2020



ION
OLA, M

7058

Long Island
Rail Road

WATCH THE GAP

WARNING
Watch the Gap

EMERGENCY
DOOR RELEASE
PULL RED HANDLE

EMERGENCY ACCESS
WINDOW
KNOCK IN

WATCH THE GAP
WATCH THE GAP

Features

New and improved

- Realtime location
- Push notifications
- Realtime and historical crowding
- In-station signage



GPS antennas

Installed across entire fleet

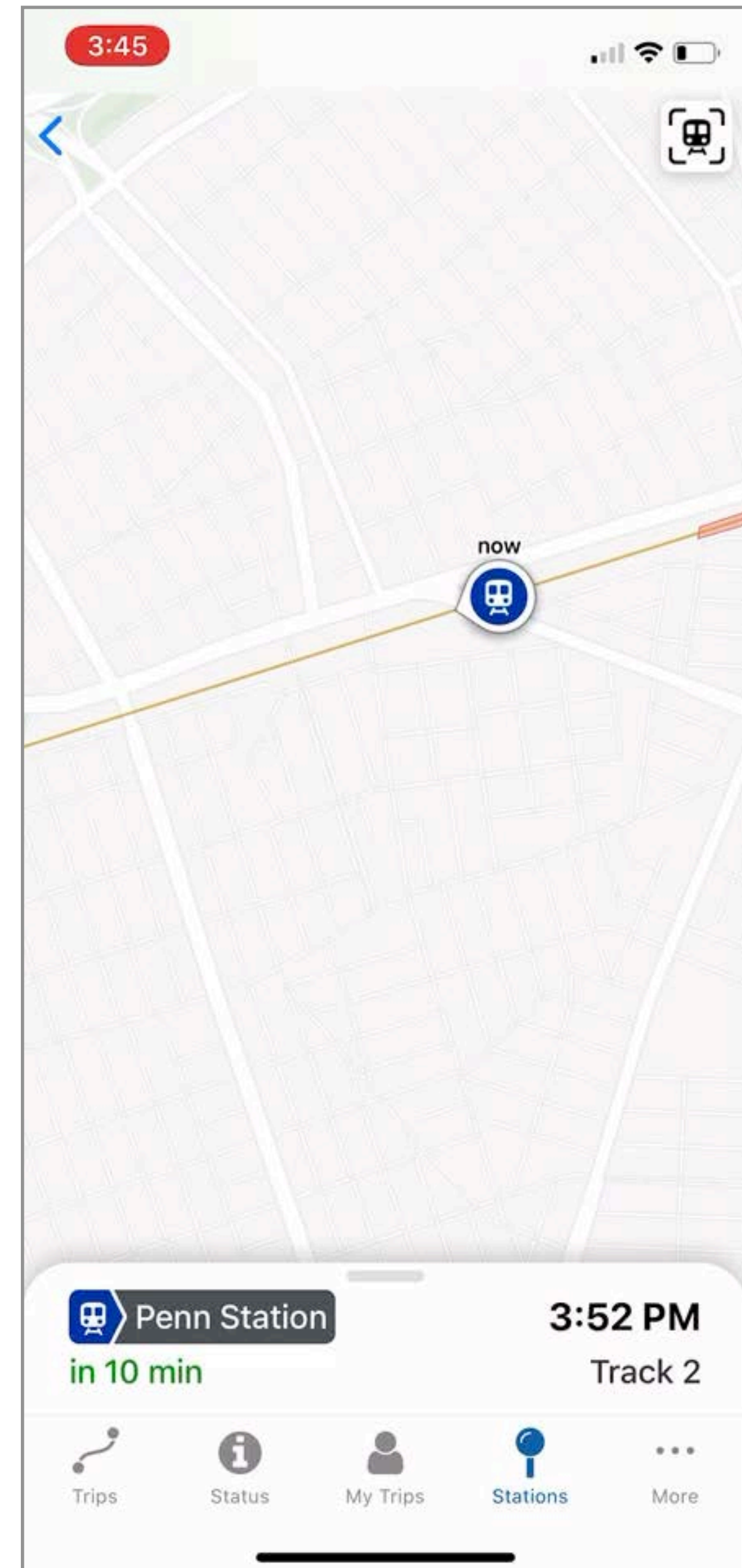
- Update with their position, speed and heading every 2 seconds



Realtime location

Meeting new user expectations

- Accurate enough to see the consist
- Integrated with signals data as train goes underground



Push notifications

Be the first to know

- Track postings at Penn Station
- Last-minute track changes
- Train held by dispatcher
- ETA to your stop



Push notifications

Be the first to know

- Track postings at Penn Station
- **Last-minute track changes**
- Train held by dispatcher
- ETA to your stop



Push notifications

Be the first to know

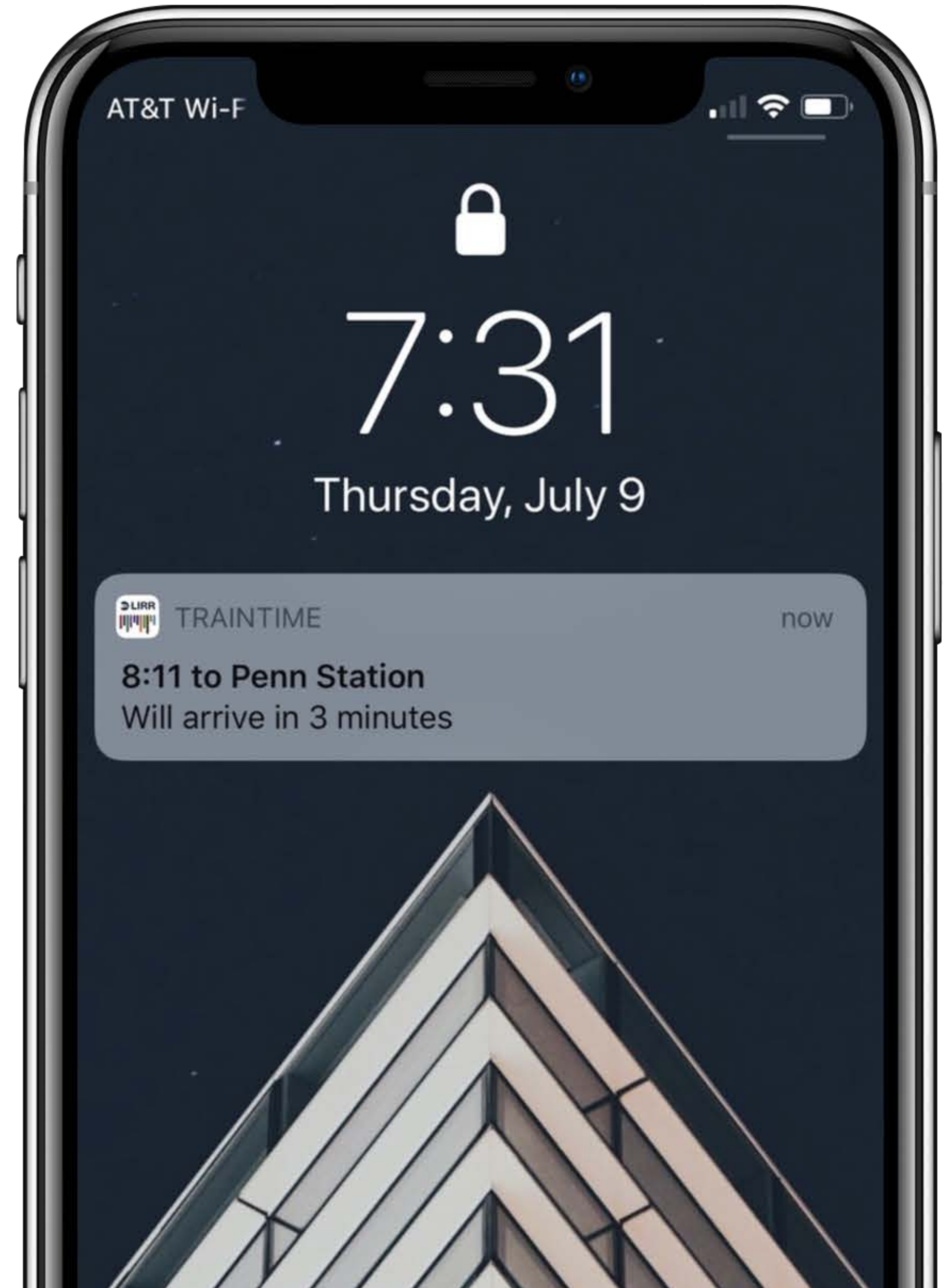
- Track postings at Penn Station
- Last-minute track changes
- **Train held by dispatcher**
- ETA to your stop



Push notifications

Be the first to know

- Track postings at Penn Station
- Last-minute track changes
- Train held by dispatcher
- **ETA to your stop**



Crowding technology

Three different technologies

1. Pressure sensors from car
2. Infrared sensors above doorways
3. People counting from security cameras



Crowding technology

Three different technologies

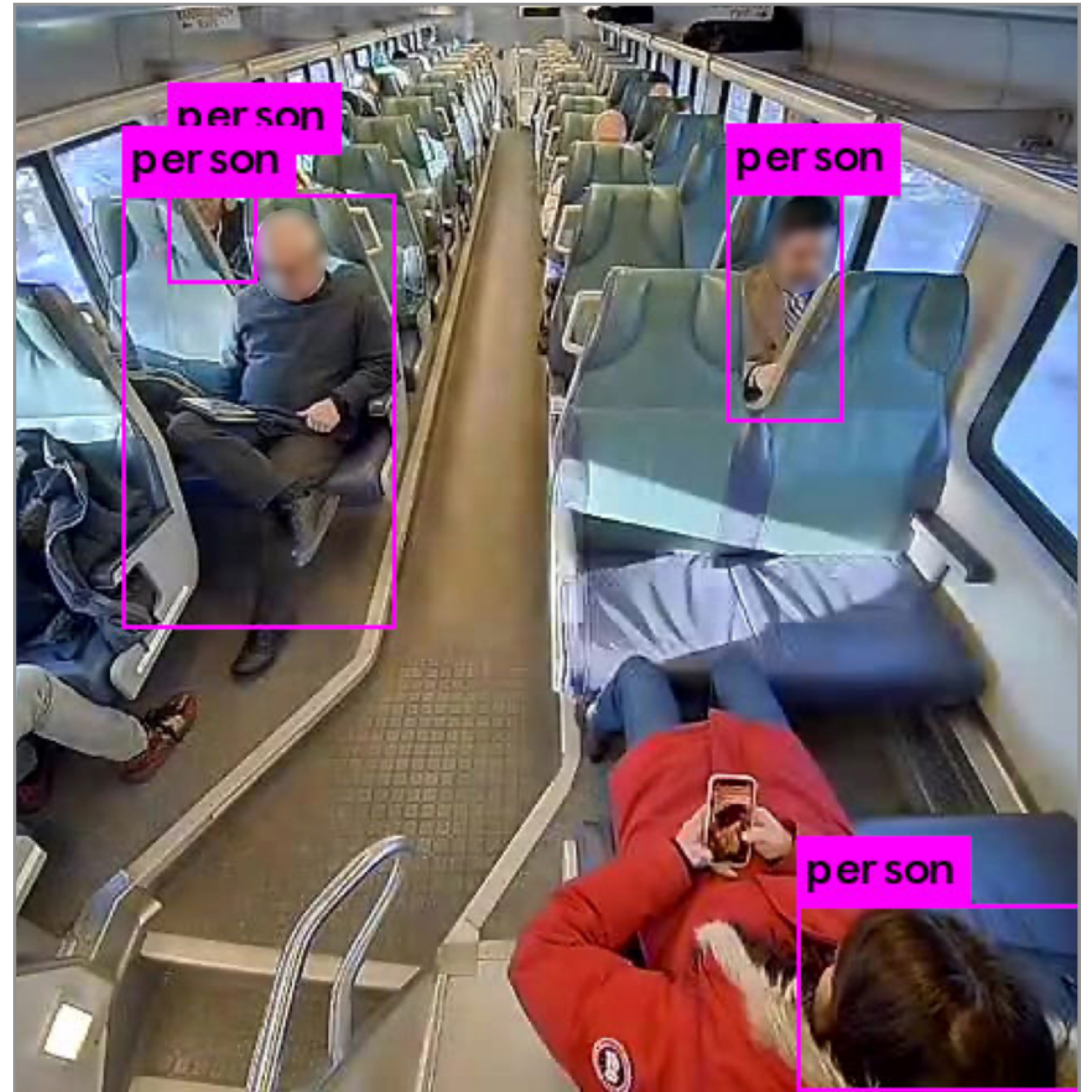
1. Pressure sensors from car
2. Infrared sensors above doorways
3. People counting from security cameras



Crowding technology

Three different technologies

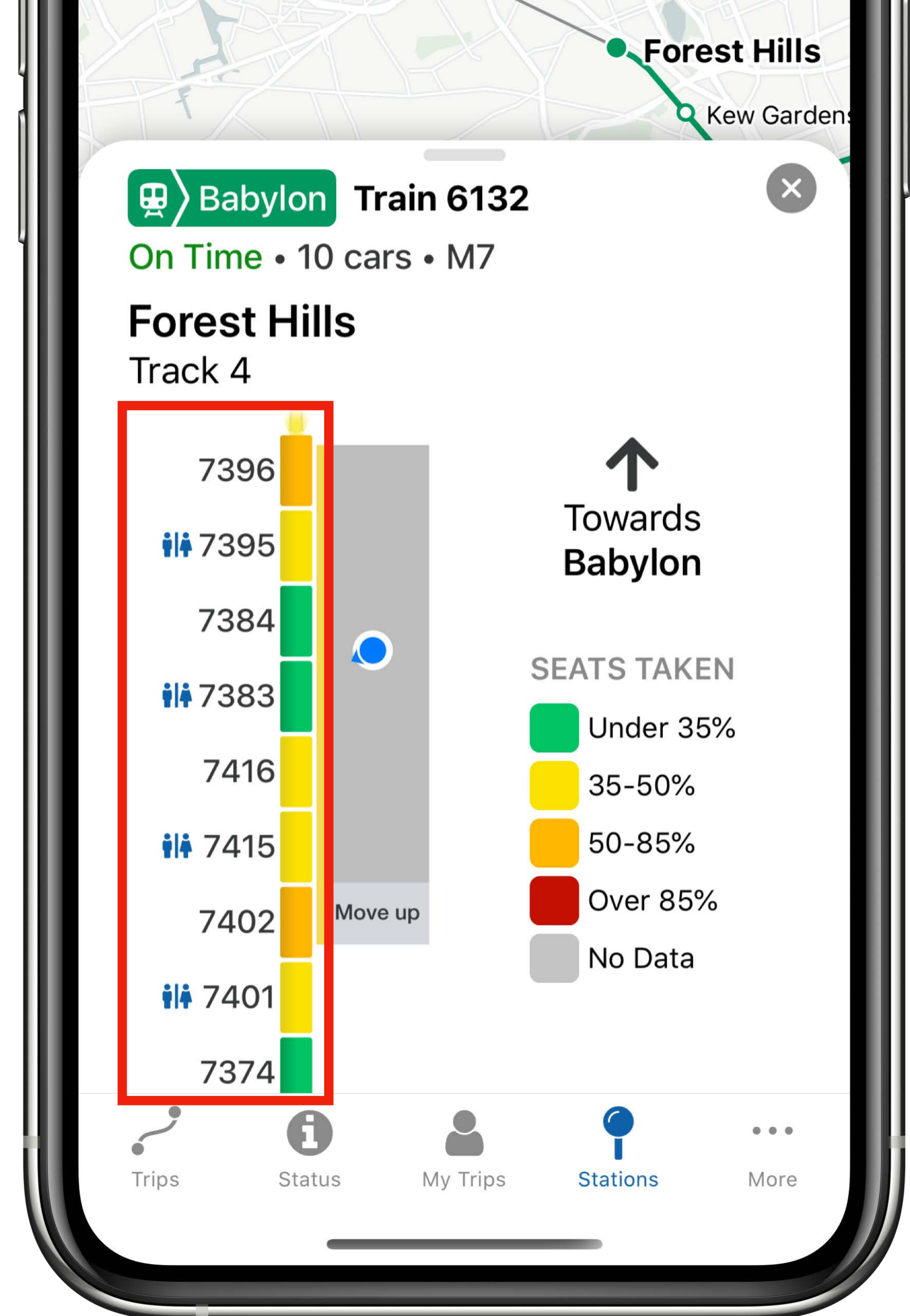
1. Pressure sensors from car
2. Infrared sensors above doorways
3. People counting from security cameras



Realtime crowding

First in North America

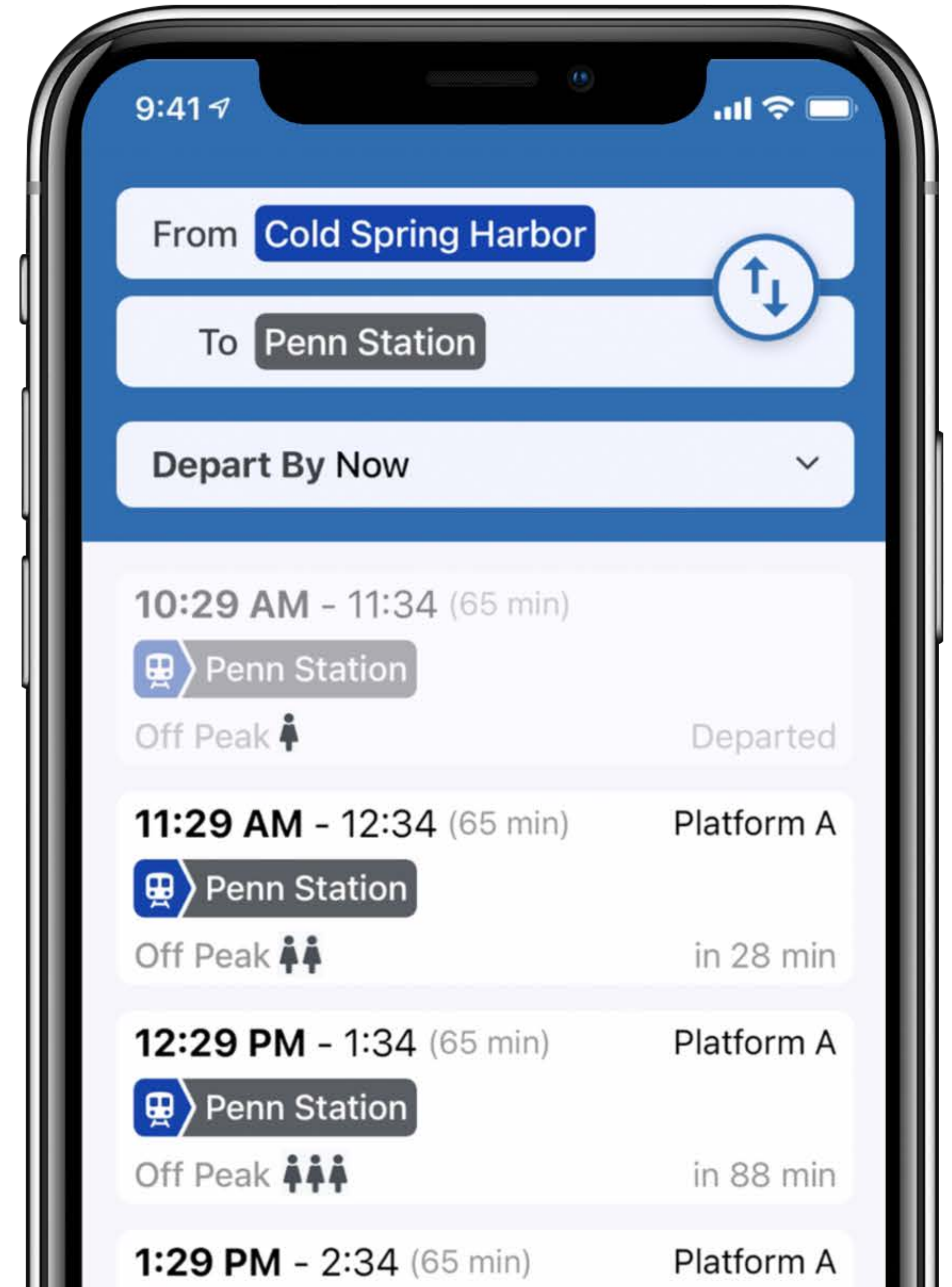
- Realtime data updated every 10 seconds
- Bucketed into 5 levels



Historical crowding

Based on realtime data

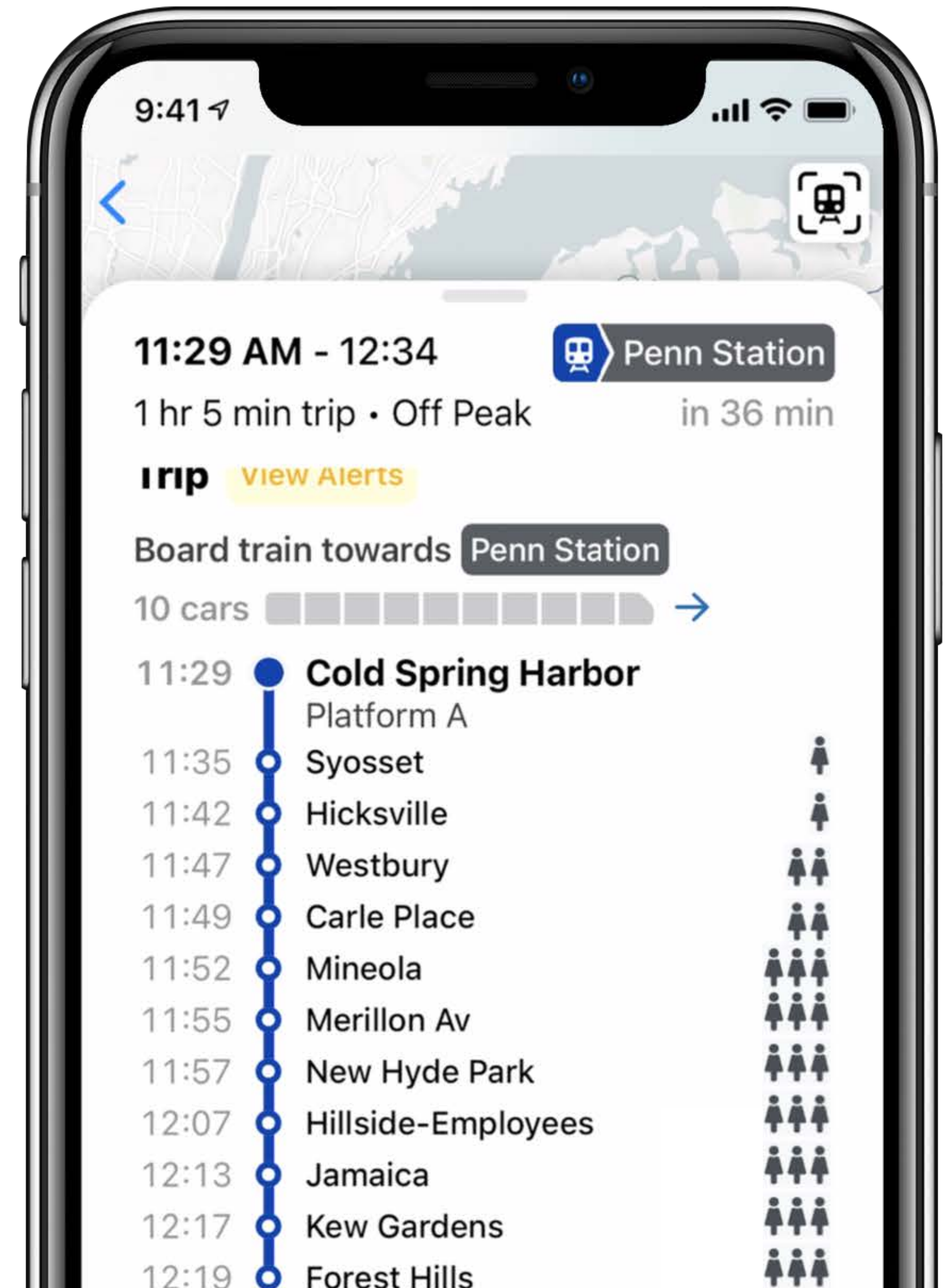
- Help customers pick a train that is less crowded



Historical crowding

Based on realtime data

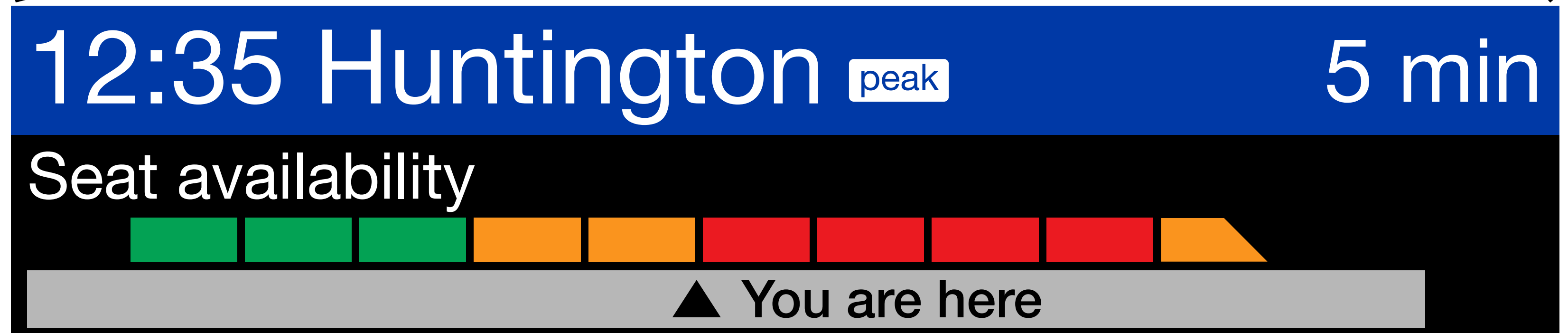
- Tracks crowding stop-by-stop over the last 7 days



In-station signage

State of the art

- Crowding
- Down to the second
- Location



In-station signage

State of the art

- Crowding
- Down to the second
- Location



12:35 Huntington peak

17 sec

- Syosset *first 6 cars*
- Cold Spring Harbor *first 6 cars*

In-station signage

State of the art

- Crowding
- Down to the second
- **Location**



5:31 Penn Station

13 min

Valley
Stream

Rosedale

Laurelton

Locust
Manor

Jamaica
You are here

Customized map styling

GPS-based location

Support for screen readers

Dark mode **Nearby trains**

Dynamic trip planning

Realtime location in tunnels

Share your trip

Colorblindness support

Siri-enabled

Consist view

Trip bookmarks

Car numbers

Planned work and incidents



Platform view

Realtime loading

Machine learning for ETA's

Available in 한국어

Service status

Push notifications

Available in Español

Historical loading

Support for large fonts

Available in 中文

Find you train car

“This is A++ and I’m jealous of LIRR riders for being able to use it.”

Aaron Gordon, transit journalist

**“The new @LIRR app?!?!?!
IMPECCABLE.”**

@prurardi on Twitter

TrainTime App

Phil Eng, peng@lirr.org

Will Fisher, wfisher@lirr.org

July 29, 2020