

CTDOT  
COMMISSIONER  
JOE GIULIETTI



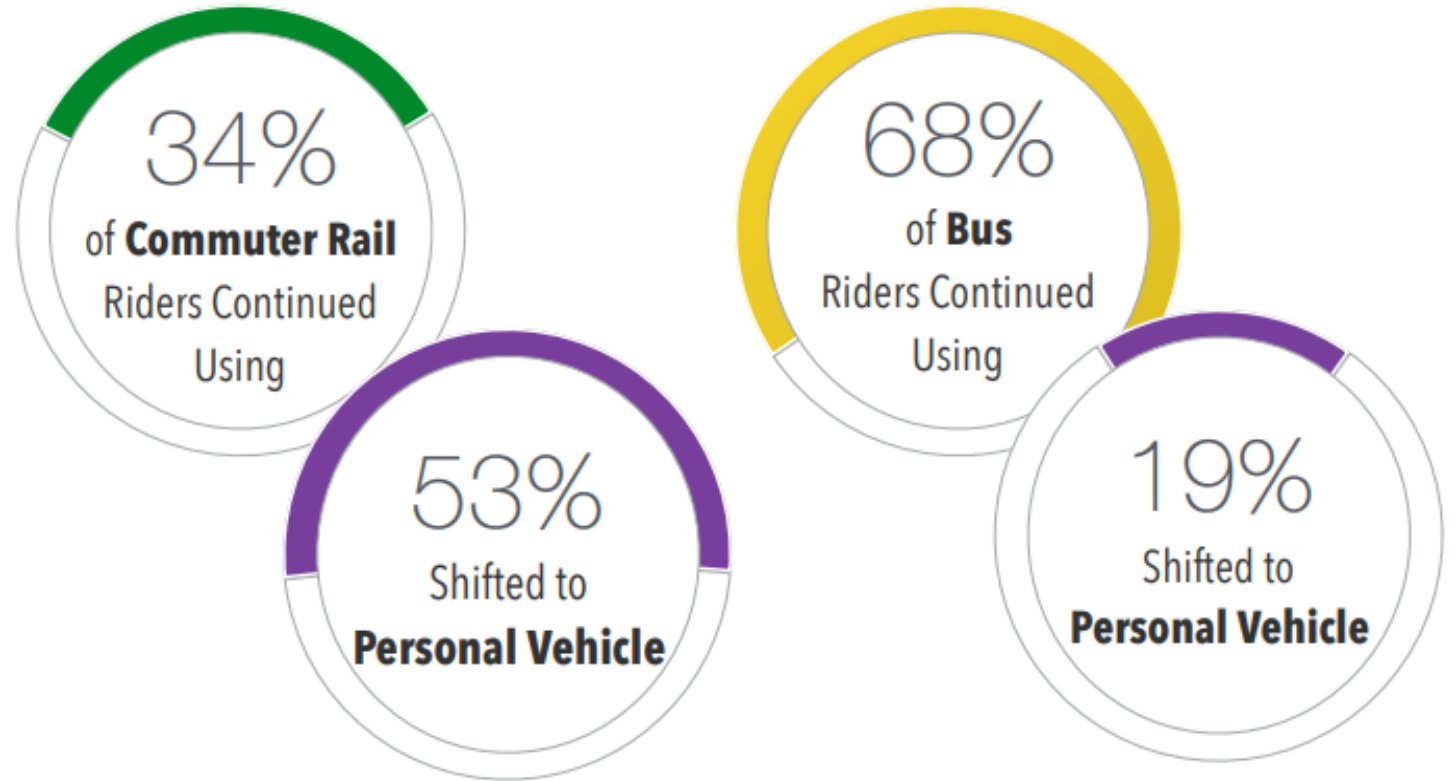
# OPERATING COMMUTER RAILROADS IN A PANDEMIC

OCTOBER 6, 2020



# RIDERSHIP IMPACTS

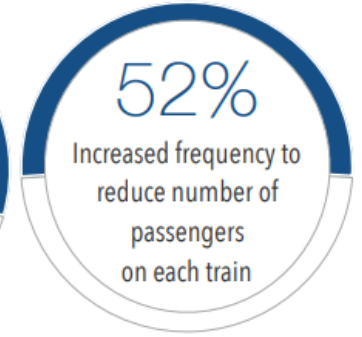
## Public Transit Use in July 2020



# CUSTOMER SAFETY



## Top Ranked Conditions to Return to Public Transit



---

# YALE UNIVERSITY & CTDOT STUDY: MITIGATING THE SPREAD OF COVID-19 IN RAILCARS

- 
- Solutions outlined in the report include:
    - Universal mask requirement.
    - Potential seating charts designed in accordance with social distancing guidelines.
    - Increased outdoor airflow.
    - Use of non-porous, smooth materials for seat covers and train surfaces.
    - Upgrade filters where possible to higher MERV filter.

---

# ACCELERATING PROJECTS

- 
- CTDOT and Metro-North working together to accelerate capital improvements.
    - Waterbury Line- \$116 million capital improvement project, when completed, will enable increased Waterbury Line rail service.
    - Danbury Line- \$15-\$20 million capital improvement project including track improvements, disposal of old cross ties, repairs to three bridges and five grade crossings and removal of fiber cable.



# REGIONAL COORDINATION AND COLLABORATION